

Narrow alu frames



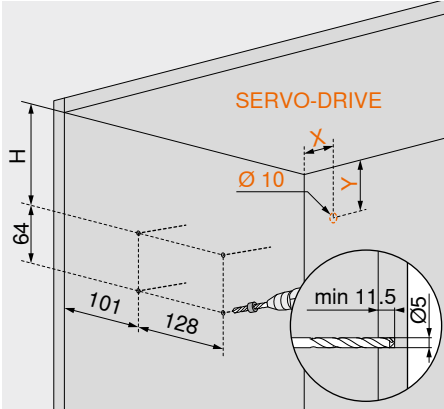
Web code – click on the code or enter it in the Product Configurator

DQDYAP

Planning

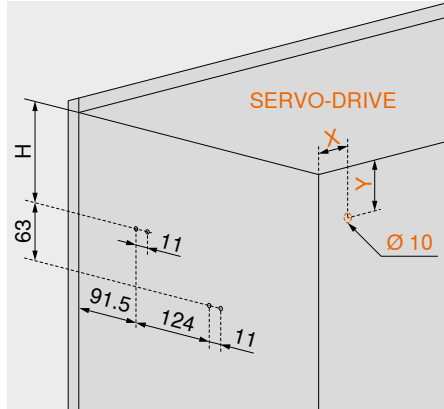
Symmetrical | asymmetrical

Drilling position – system screws



Cabinet height H (mm)	X (mm)	Y (mm)
480–519	93.5	102
520–1200	116	124

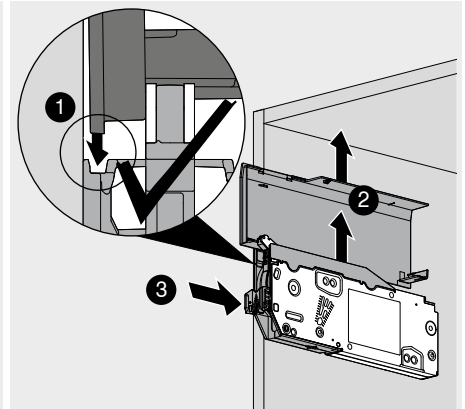
Drilling position – chipboard screws



Cabinet height H (mm)	X (mm)	Y (mm)
480–519	93	102
520–1200	115.5	124

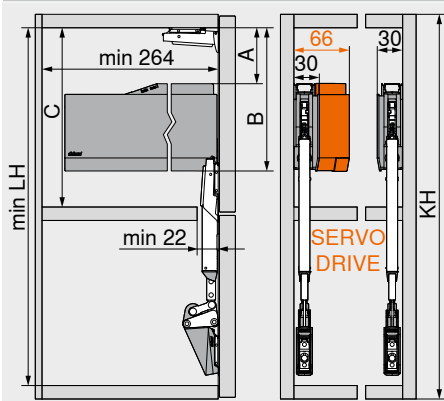
4 x chipboard screws Ø 4 x 35 mm

Positioning system – chipboard screws



Cabinet height KH (mm)
520–1200

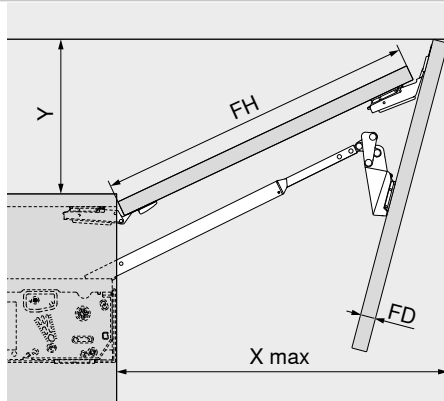
Space requirement



Lever arm set	LH min. (mm)
22F3200	443
22F3500	512
22F3900	632

KH (mm)	A (mm)	B (mm)	C min. (mm)
480–519	66.5	171.5	172
520–1200	89.0	194.0	195

KH Cabinet height
LH Internal cabinet height

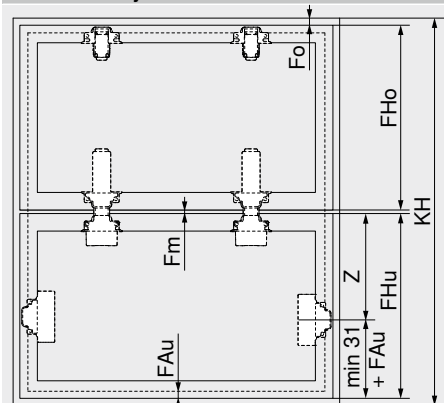


$X \max. = FH \times 0.9 + FD \times 1.5 + 35$

Opening angle stop	Y (mm)
116°	FH x 0.44 + 38
107°	FH x 0.29 + 35
97°	FH x 0.12 + 31
88°	28
81°	0

FH Front height
FD Front thickness

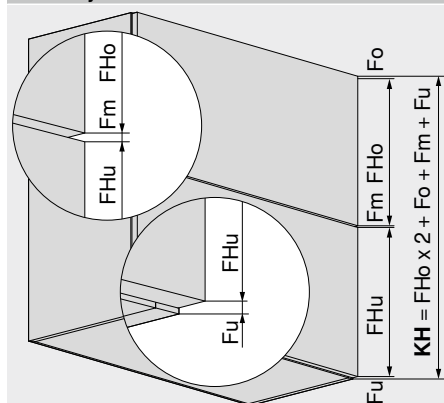
Front assembly



Cabinet height KH (mm)	Z (mm)
480–549	188
520–1200	207

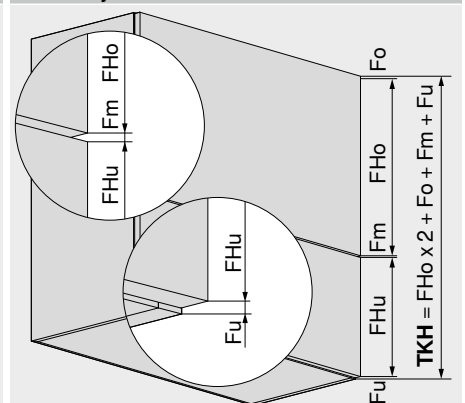
Fo Top gap
Fm Middle gap
FAu Bottom front overlay
FHo Upper front height
FHu Lower front height

Front – symmetrical



Fo Top gap
Fm Middle gap
Fu Bottom gap
FHo Upper front height
FHu Lower front height
KH Cabinet height

Front – asymmetrical



Fo Top gap
Fm Middle gap
Fu Bottom gap
FHo Upper front height
FHu Lower front height
TKH Theoretical cabinet height